



The Story of DETERMINE

Mobilising Action for Health Equity in the EU

Caroline Costongs
Deputy Director
EuroHealthNet

www.eurohealthnet.eu

DETERMINE Facts

EU Consortium of **50** bodies to act on the Social Determinants of Health in **24** countries

June 2007- June 2010

Coordinator: EuroHealthNet

Contract holder: Czech National Institute of Public Health

Co-funder: EC DG SANCO

5 Work Package leaders
(BZgA, PH Institute Ireland, NSMC England, IUHPE and Centre HP Finland)

& Figures

4 Consortium meetings

Consultations with **40** Policy Makers

120 good practices in online database

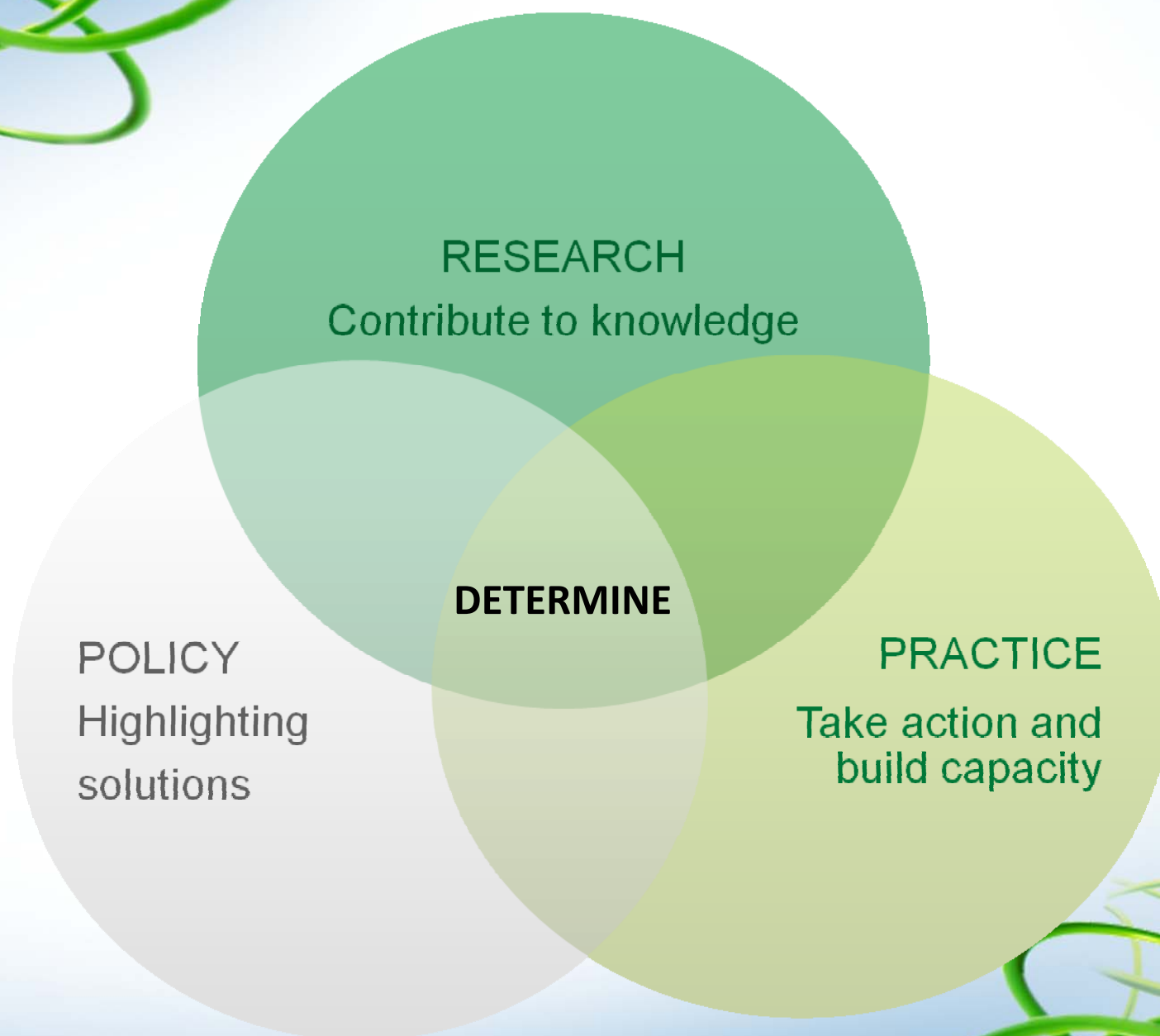
4 Working documents and **3** publications

22 capacity building actions in **20** countries

25 tools for HiAP identified

13.000 visits to the website per month

www.health-inequalities.eu



RESEARCH
Contribute to knowledge

POLICY
Highlighting
solutions

DETERMINE

PRACTICE
Take action and
build capacity

DETERMINE contribution to knowledge and research

We collected and analysed:

- **Examples of policies that address SDHI**

not many from sectors such as justice, finance, foreign affairs, trade

- **Examples of mechanisms that facilitate cross sectoral work**

impact assessments (health/equity) or OMC

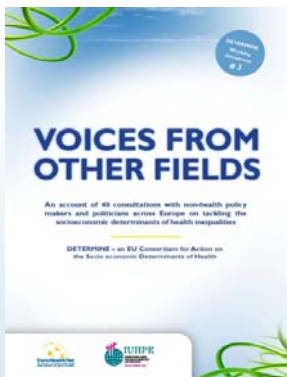
- **The situation regarding the monitoring of SDHI indicators**

- **Consultations with 40 policy makers from non-health sectors**

- ad hoc cooperation & not on HI *per se*

- no knowledge of gradient

- mandates needed to cross sectors





Cost benefit arguments for SDHI

- Aim: to find economic evaluations that **costed policies** and **measured returns** in health and economic outcomes and made a contribution to tackling health inequalities
- Examples in **public health policy** (physical activity, smoking, diet, suicide) and in **non health policy** (transport, housing, early childhood education)
- **Influencing factors** i.e.: government support for SDHI, availability of personnel, data, techniques
- More **exchange and investment** needed to make the economic case for SDHI

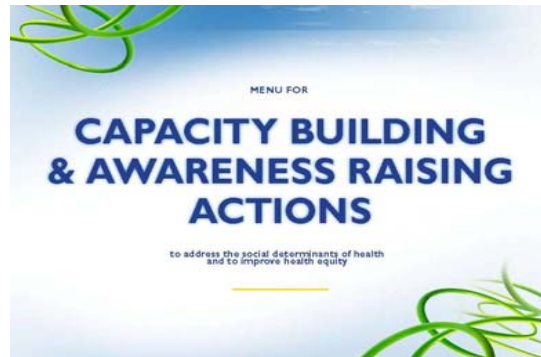
DETERMINE: Innovation

- Aim: to identify **innovative** approaches to addressing SDHI and **transferable** learning
- Innovation:
 - difficult to define
 - subjective
 - relative
- Support for 3 pilot projects in Denmark, Slovenia, Hungary
- Transferable example: PPP between the social sector & **tourism** industry, negotiating reduced prices for low-income groups, over 50.000 trips per year in Flanders, clear benefits



DETERMINE: Take action and build capacity

With a “menu of activities and tools” we encouraged DETERMINE partners to increase their capacity to work on the SDHI.



Activities such as:

CB plan on SDH for PH-HP organisations (in Belgium, Slovenia)

Training courses on SDH (in Estonia, Italy, Poland, Spain, Wales)

Tools and guidelines for partnership working (in Germany, NL)

High level event and conferences (Hungary, Czech Republic)



DETERMINE policy and advocacy: Our Key Messages

Put SDHI at the forefront of the policy agenda

Make clear that the health gradient affects all groups of society

Collect SDHI data that is understandable, comparable and actionable

Develop legislation, reorient workforce and resource base for SDHI approaches

Invest and systematically apply impact assessments, economic analysis and policy evaluations

Support local level actors in addressing SDHI

Continue EU support for cross-sectoral action, capacity building and public engagement

DETERMINE Consortium (2007-2010)

1. Successful mobilisation of people
2. equity @ core of all strategies and urgent focus on social determinants

